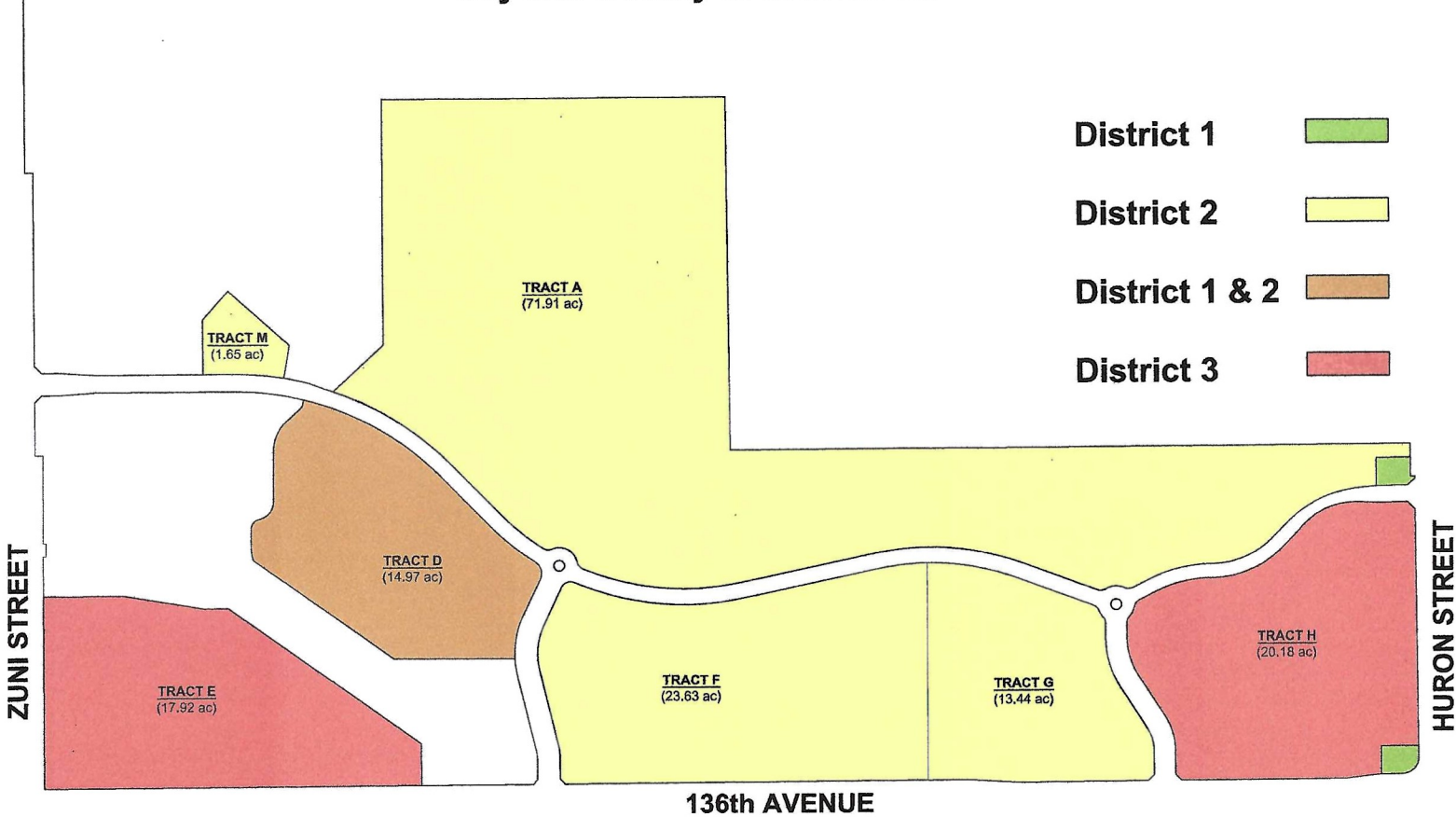
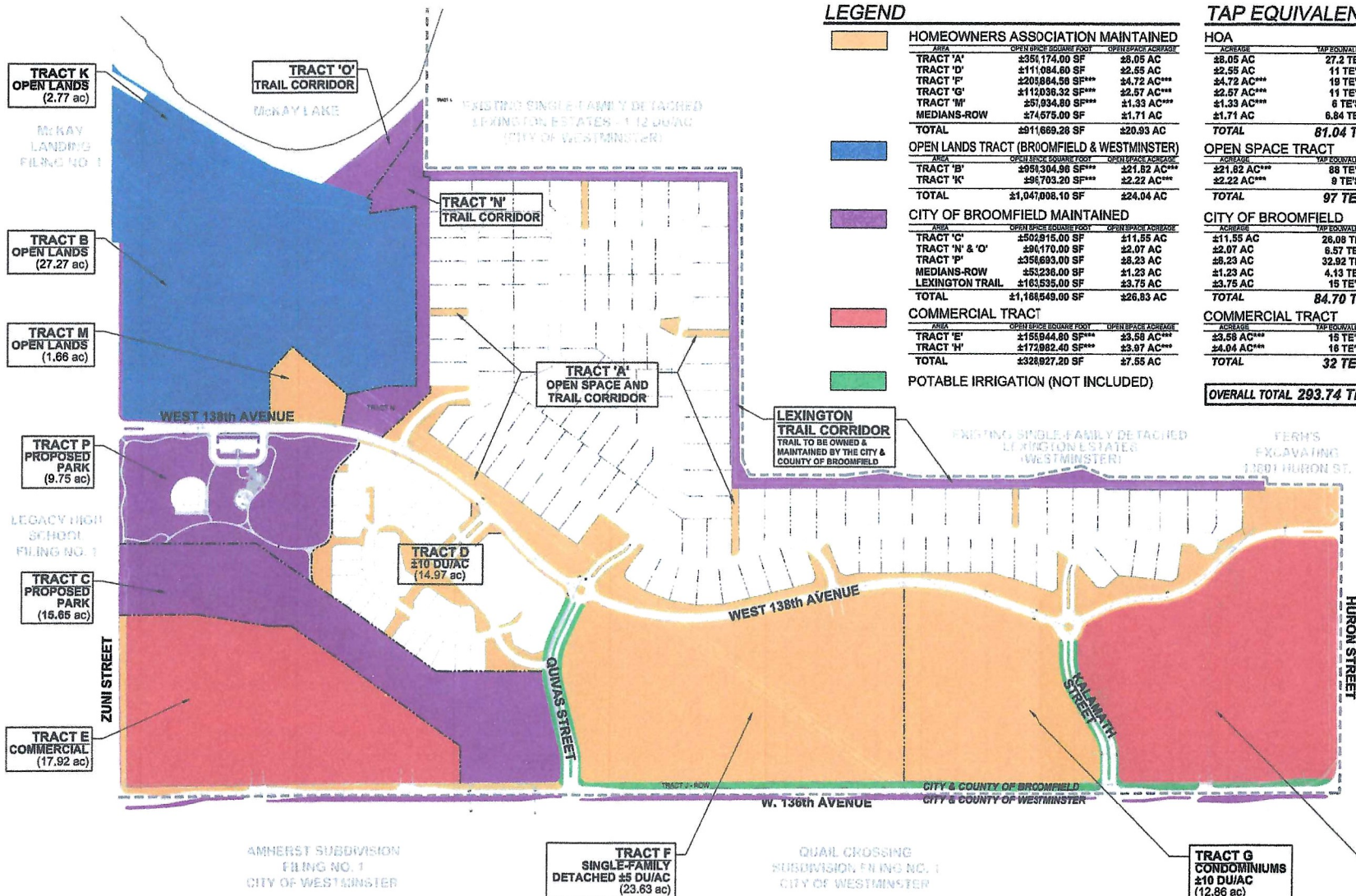


**LAMBERTSON FARMS  
METROPOLITAN DISTRICTS  
City and County of Broomfield**



# Lambertson Farms P.U.D.

City & County of Broomfield, Colorado



### LEGEND

AREA	OPEN SPACE (SQUARE FOOT)	OPEN SPACE ACREAGE
<b>HOMEOWNERS ASSOCIATION MAINTAINED</b>		
TRACT 'A'	±351,174.00 SF	±8.05 AC
TRACT 'D'	±111,084.00 SF	±2.55 AC
TRACT 'P'	±203,984.58 SF***	±4.72 AC***
TRACT 'Q'	±112,038.32 SF***	±2.57 AC***
TRACT 'M'	±57,934.80 SF***	±1.33 AC***
MEDIANS-ROW	±74,675.00 SF	±1.71 AC
<b>TOTAL</b>	<b>±911,869.28 SF</b>	<b>±20.93 AC</b>
<b>OPEN LANDS TRACT (BROOMFIELD &amp; WESTMINSTER)</b>		
TRACT 'B'	±951,304.96 SF***	±21.82 AC***
TRACT 'K'	±96,703.20 SF***	±2.22 AC***
<b>TOTAL</b>	<b>±1,047,008.16 SF</b>	<b>±24.04 AC</b>
<b>CITY OF BROOMFIELD MAINTAINED</b>		
TRACT 'C'	±505,915.00 SF	±11.55 AC
TRACT 'N' & 'O'	±96,170.00 SF	±2.07 AC
TRACT 'P'	±356,693.00 SF	±8.23 AC
MEDIANS-ROW	±53,238.00 SF	±1.23 AC
LEXINGTON TRAIL	±163,535.00 SF	±3.75 AC
<b>TOTAL</b>	<b>±1,166,549.00 SF</b>	<b>±26.83 AC</b>
<b>COMMERCIAL TRACT</b>		
TRACT 'E'	±156,944.80 SF***	±3.58 AC***
TRACT 'H'	±172,982.40 SF***	±3.97 AC***
<b>TOTAL</b>	<b>±329,927.20 SF</b>	<b>±7.55 AC</b>
<b>POTABLE IRRIGATION (NOT INCLUDED)</b>		

### TAP EQUIVALENTS

HOA	ACREAGE	TAP EQUIVALENTS
	±8.05 AC	27.2 TE'S
	±2.55 AC	11 TE'S
	±4.72 AC***	18 TE'S
	±2.57 AC***	11 TE'S
	±1.33 AC***	6 TE'S
	±1.71 AC	6.84 TE'S
<b>TOTAL</b>	<b>81.04 TE'S</b>	
<b>OPEN SPACE TRACT</b>		
	±21.82 AC***	88 TE'S
	±2.22 AC***	9 TE'S
<b>TOTAL</b>	<b>97 TE'S</b>	
<b>CITY OF BROOMFIELD</b>		
	±11.55 AC	26.09 TE'S
	±2.07 AC	8.57 TE'S
	±8.23 AC	32.92 TE'S
	±1.23 AC	4.13 TE'S
	±3.75 AC	18 TE'S
<b>TOTAL</b>	<b>84.70 TE'S</b>	
<b>COMMERCIAL TRACT</b>		
	±3.58 AC***	18 TE'S
	±4.04 AC***	18 TE'S
<b>TOTAL</b>	<b>32 TE'S</b>	
<b>OVERALL TOTAL 293.74 TE'S</b>		

### WATER REQUIREMENTS

HOA	ACREAGE	TAP EQUIVALENTS
<b>20.93 AC OF TURF/NATIVE/SHRUB AREA</b>		
	±20.93 AC ± 0.125" ± 58 WATERING WEEKS	
	= 82.47 AC/FTYR	
	= 75,025 AC FTYR ± 358,951 GAL	
	= 21,312,891 GAL/YR	
	= 21,312,891 / 7.48 GAL	
	= 2,849,290.20 CUBIC FEET/YR	
<b>OPEN SPACE TRACT</b>		
<b>24.04 AC OF TURF/NATIVE/SHRUB AREA</b>		
	±24.04 AC ± 0.125" ± 58 WATERING WEEKS	
	= 78,125 AC/FTYR	
	= 75,025 AC FTYR ± 358,951 GAL	
	= 24,479,556 GAL/YR	
	= 24,479,556 / 7.48 GAL	
	= 3,272,667.50 CUBIC FEET/YR	
<b>CITY OF BROOMFIELD</b>		
<b>26.83 AC OF TURF/NATIVE/SHRUB AREA</b>		
	±26.83 AC ± 0.125" ± 58 WATERING WEEKS	
	= 83.84 AC/FTYR	
	= 78,125 AC FTYR ± 358,951 GAL	
	= 27,170,599 GAL/YR	
	= 27,170,599 / 7.48 GAL	
	= 3,632,437.16 CUBIC FEET/YR	
<b>COMMERCIAL TRACT</b>		
<b>7.55 AC OF TURF/NATIVE/SHRUB AREA</b>		
	±7.55 AC ± 0.125" ± 58 WATERING WEEKS	
	= 23.56 AC/FTYR	
	= 23,560 AC FTYR ± 106,904 GAL	
	= 7,886,047 GAL/YR	
	= 7,886,047 / 7.48 GAL	
	= 1,054,284.37 CUBIC FEET/YR	

### CITY AND COUNTY OF BROOMFIELD TAP EQUIVALENT DEFINITIONS

1. CITY AND COUNTY OF BROOMFIELD WATER STANDARDS:  
 - THE WEEKLY WATER REQUIREMENT = 1.0" (1.8 ESTIMATED SYSTEM EFFICIENCY) ± 50%  
 - NUMBER OF DAYS PER WEEK AVAILABLE FOR IRRIGATION PER = 4 DAYS/WK  
 - OPERATING HOURS PER DAY PER = 10 HOURS  
 - WATER EQUATIONS:  
 - 1.0" = 0.125" DEPTH OF WATER  
 - 1 AC = 263,951 GAL  
 - 1 CUBIC FEET = 7.48 GAL  
 - NATIVE SEED AREAS AND SIDEWALKS MAY REQUIRE LESS TE'S BASED UPON ESTIMATED WATER USAGE COST.  
 - \*\*TRACTS THAT ARE NOT YET DESIGNED ARE ASSUMED TO HAVE 20% OF THE TOTAL AREA AS OPEN SPACE FOR DEVELOPED PARCELS AND 50% FOR PARK/OPEN LANDS

**NOTE:**  
 THIS PLAN IS INTENDED TO QUANTIFY THE POTENTIAL TOTAL IRRIGATION DEMAND FOR THE LAMBERTSON FARMS P.U.D. SO THE CITY CAN CONFIRM THE NON-POTABLE WATER SUPPLY FOR THIS P.U.D.



## Non-Potable Irrigation Water Demand Analysis

December 5th, 2007 - Rev. December 12th, 2007 - 2nd Rev. September 27, 2008  
 Prepared by: Land Architects Incorporated, 4800 28th Street

## LAND ARCHITECTS

perspective | balance | solutions

Highlands Ranch 303.734.1777 | Fort Collins 970.484.4180 | www.landarchitects.net